



HEALTH SURVEILLANCE EXPLORER



STAY INFORMED WITH THE HEALTH SURVEILLANCE EXPLORER (HSE)

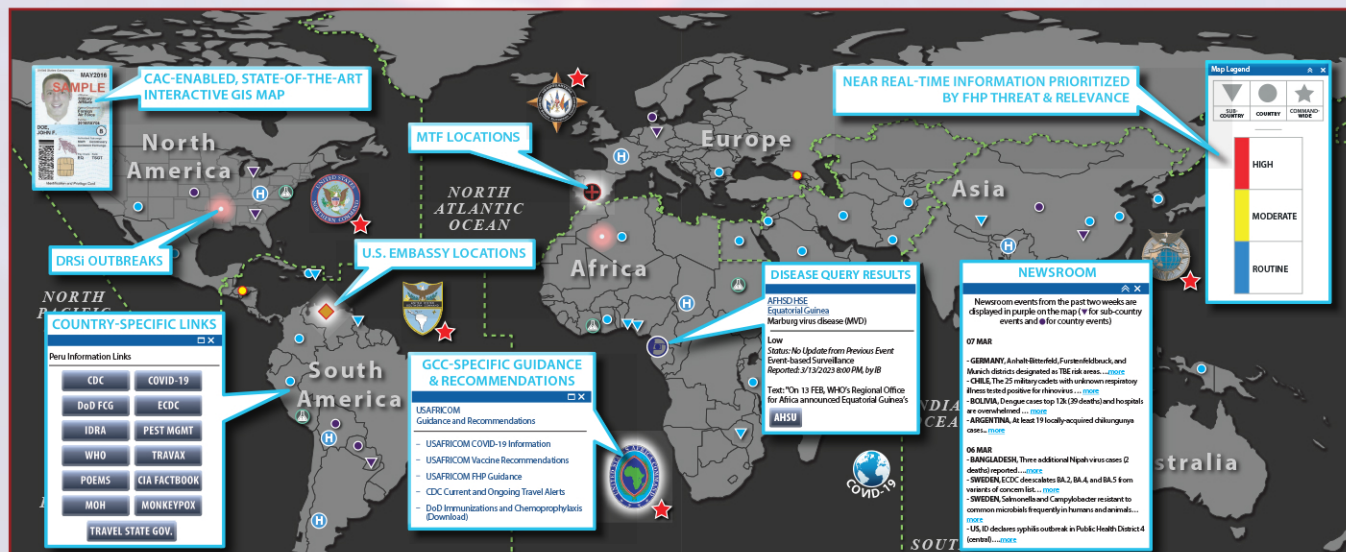
The HSE is a CAC-enabled mapping application that provides near real-time integrated global health surveillance information for Force Health Protection. With the HSE, decision makers can identify, analyze, and evaluate health threats and disease outbreaks worldwide to improve operational readiness for all joint force members.

THE HSE PROVIDES:

- ✓ Access to surveillance products including the AFHSD Health Surveillance Updates, Surveillance Summaries, and more
- ✓ GCC and country-specific information on disease prevention recommendations
- ✓ Ability to customize view to display current health events or analyze historical trends by country, disease, or GCC
- ✓ Access to CDC Travel Notices, Travax Medical Facilities, U.S. Embassies, U.S. Department of State Travel Advisories, ECDC country profiles, Foreign Ministries of Health, Armed Forces Pest Management Summaries, DoD Foreign Clearance Guides, NCMI Infectious Disease Risk Assessments, and more

CURRENT HSE FEATURES:

- Health Events
- Heat/Cold Injury Dashboard
- Mpox Dashboard
- 2022 Uganda Ebola Map
- SARS-CoV-2 Variants of Concern Map
- COVID-19 Dashboard
- Newsroom



EMPOWER YOUR DECISION MAKERS WITH NEAR REAL-TIME INTEGRATED GLOBAL HEALTH SURVEILLANCE INFORMATION USING THE HSE, THE ULTIMATE TOOL FOR FORCE HEALTH PROTECTION

Log-on to the NIPR HSE at:
<https://www.health.mil/hse>

Or visit the SIPR HSE at:
<https://go.intelink.sgov.gov/scKhIHM>

For questions or support, contact us at:
dha.ncr.health-surv.mbx.hse-techsupport@health.mil